



**STATEMENT OF INTENT
2010/2015**

TABLE OF CONTENTS

	PAGE
INTRODUCTION	3
CORE BUSINESS	4
OBJECTIVES	4
- COMMERCIAL	
- QUALITY OF SUPPLY	
- SOCIAL	
- ENVIRONMENTAL	
- PRICING	
PERFORMANCE TARGETS	7
PROPOSED DISTRIBUTIONS	8
INFORMATION TO BE REPORTED	8
ACQUISITION PROCEDURES	8
COMPENSATION SOUGHT FROM LOCAL AUTHORITIES	8
BOARD ESTIMATE OF THE VALUE OF SHAREHOLDERS' INVESTMENT	8
GOVERNANCE	9
- ROLE OF THE BOARD	
- BOARD PERFORMANCE	
- STATEMENT OF INTENT	
- INVESTMENT PERFORMANCE	
STATEMENT OF ACCOUNTING POLICIES	10

INTRODUCTION

This Statement of Intent (SOI) sets out Electricity Invercargill Limited's (EIL) overall intentions and objectives for EIL and the EIL Group for the year ending 31 March 2011 and the four succeeding years.

EIL is a profit orientated limited liability company that was incorporated in New Zealand on 30 June 1991. The Company is a wholly owned subsidiary of Invercargill City Holdings Limited (ICHL). The EIL Group consists of EIL, its wholly owned subsidiary Pylon Limited, its interest in joint venture entities PowerNet Limited and OtagoNet Joint Venture and its interest in associate entities, Power Services Limited, Otago Power Services Limited and Electricity Southland Limited.

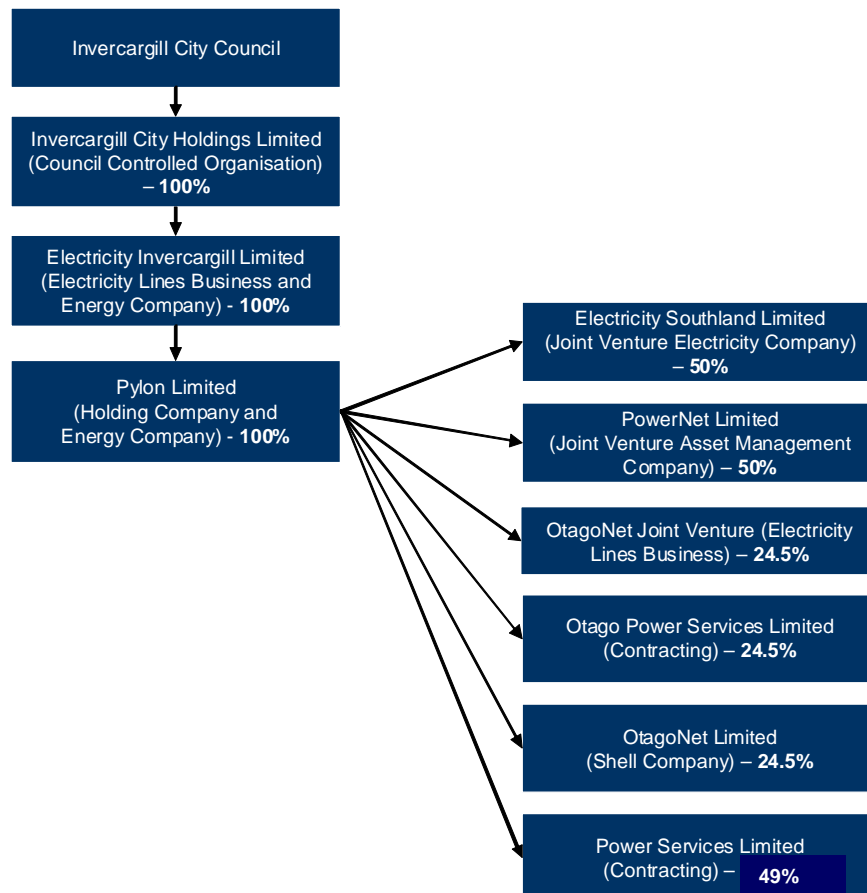
EIL is an Energy Company as defined by the Energy Companies Act 1992 and as such is specifically excluded from being a Council Controlled (Trading) Organisation as defined in the Local Government Act 2002.

The SOI has been prepared in accordance with the Energy Companies Act 1992 and takes into account the likely reporting requirements of EIL's shareholder ICHL as required by the Local Government Act 2002.

The SOI is a public statement of the activities and intentions of EIL incorporating its subsidiaries, joint ventures and associate entities. It sets out the nature and scope of activities intended to be undertaken, its objectives and key performance indicators by which EIL's performance can be measured.

The SOI is prepared and forwarded as a draft for comment to ICHL on or before 1 March each year. After consideration of any comments from ICHL the SOI is finalised before 30 June each year.

The EIL group structure comprises:



CORE BUSINESS

The nature and scope of activities undertaken by EIL are:

- To operate an electricity distribution network and metering service in the Invercargill City and Bluff area in a reliable, efficient and effective manner.
- To manage, grow and if appropriate realise subsidiary, joint venture and associate investments in the infrastructure, electrical and energy sectors.
- To operate a successful business for the benefit of the Company's shareholder.

OBJECTIVES

EIL aims to operate as a successful business. We strive to become an efficient and effective operation within the electricity industry and provide stakeholders with an appropriate balance of:

- competitive pricing
- above average levels of service
- acceptable social and environmental impacts
- commercial return on investment.

EIL needs to balance a number of objectives to achieve this outcome. These objectives include:

COMMERCIAL

The Company intends to:

- Manage its operations in a progressive and commercial manner.
- Undertake new investments, that:
 - have relevance to the core business
 - yield a return at least equal to the risk adjusted weighted average cost of capital for those investments
 - are undertaken in a manner that will increase the commercial value of the business.
- If appropriate, realise investments over time.

QUALITY OF SUPPLY

EIL is one of the most reliable electricity distribution networks in New Zealand.

EIL's network is managed through an agreement with its joint venture entity PowerNet Limited. PowerNet operates the network in accordance with this agreement, EIL's network security of supply standard and the 10 year asset management plan (AMP). The AMP is published each year in accordance with the Electricity Information Disclosure Requirements and provides an opportunity for customers to provide input into the operation of their electricity network.

EIL monitors the performance of its network through a variety of key performance indicators. The network supply quality targets are shown in the Performance Targets later in the SOI.

EIL is subject to price and quality thresholds under the jurisdiction of the Commerce Commission and reports in May each year on quality of supply performance against these thresholds.

EIL will endeavour to ensure the region has a secure and cost effective electricity supply and transmission system. EIL will continue to represent the region and be involved with dry year power crisis issues that may affect Southland despite the overall responsibility for these issues being under the watchful eye of the Electricity Commission.

SOCIAL

EIL's key role in the community is to continue to ensure the region has a secure and cost effective electricity and transmission system.

The community is fortunate that EIL by operating a commercial business is able through its ownership structure to provide a community benefit through a regular dividend stream to its shareholder, ICHL. ICHL is in turn owned by the Invercargill City Council.

EIL will endeavour either in its own capacity or through its joint ventures or associate investments to:

- encourage safe work practices amongst staff and contractors working on the company's network
- minimise car hit pole accidents
- provide a limited number of key community sponsorships
- with the Southland Electric Power Supply Consumer Trust commit \$170,000 to the operation and ongoing monitoring of the Southland Warm Homes Trust
- provide targeted trainee programmes for talented individuals for key positions within our business associates
- ensure adequate and cost effective Transpower services to the region
- ensure adequate electricity generation resources are available.

ENVIRONMENTAL

EIL is committed towards a sustainable environment and progressively reducing its impact on the environment. We will achieve this by focusing on:

- reducing carbon emissions and the impact on the environment within EIL owned organisations
- relationships with suppliers who can demonstrate a commitment to sustainability
- facilitating connection or investing in low carbon emitting generation
- reducing power losses through peak load management and electricity network investment decisions.

EIL has the highest ratio of underground cables to overhead lines of any electricity distribution business in New Zealand.

The past and present commitment of the Company and Directors to undergrounding within the City will continue to have a number of positive spin offs including improved reliability, aesthetics and public safety for generations to come.

PRICING AND REGULATORY REGIME

EIL has been subject to price and quality thresholds under the jurisdiction of the Commerce Commission and reports in May each year as to whether it has remained within the price path thresholds set by the Commission.

The price path threshold involves electricity lines businesses being allowed to increase their prices by CPI-X. For EIL X was set equal to zero which allows the company to increase its prices by CPI each year and stay within the thresholds. The nature of the regime means EIL has to estimate CPI for the next year ending 31 March. The threshold regime currently allows EIL to directly pass through any price increases from Transpower.

With the introduction of amendments to the Commerce Act in late 2008 it is likely there will be significant improvements in the certainty surrounding the regulatory environment for Electricity Lines Businesses.

The amendments to the Act replace the existing price path threshold regime with a default price path (CPI-X) with the opportunity for individual businesses to apply for a customized price path. Under this new control regime a breach of the default price path will however be a breach of the law as opposed to a threshold under the previous regime.

The Act requires the Commission to determine a number of input methodologies over the next two years which are the key inputs leading to the measurement of performance of Electricity Lines Businesses.

Draft consultation papers released by the Commission indicate that the starting prices for the new regime will be the prices as at 31 March 2010; that X for all businesses will be set to zero in the next regulatory period, and that prices may be adjusted further by the Commission when the input methodologies are finalised.

EIL sets its prices in accordance with its line pricing methodology which is published each year in accordance with the Electricity Information Disclosure Requirements and is committed to staying within the present price path.

EIL will work with the industry and the regulator to ensure its prices recover reasonable costs and allow it to provide a high quality service to consumers, an appropriate return to shareholders and meet social and environmental requirements.

PERFORMANCE TARGETS

Financial

Listed below are the Group forecast returns for the next five years:

EBIT% - PERCENTAGE EARNINGS BEFORE TAX AND INTEREST ON ASSETS EMPLOYED

	2011	2012	2013	2014	2015
Net Profit Before Tax (NPBT)	8,693,350	8,544,812	8,565,759	9,043,935	9,430,689
Interest	1,364,580	1,364,580	1,364,580	1,364,580	1,364,580
Net Profit Before Interest and Taxation	10,057,930	9,909,392	9,930,339	10,408,515	10,795,269
Total Assets	121,799,942	124,340,649	127,735,855	130,649,938	133,384,704
EBIT %	8.26%	7.97%	7.77%	7.97%	8.09%

NPAT% - PERCENTAGE TAX PAID PROFIT ON EQUITY

	2011	2012	2013	2014	2015
Net Profit After Tax (NPAT)	6,797,949	6,611,097	6,562,924	6,905,213	7,172,319
Equity	78,187,666	80,590,296	82,830,153	85,177,924	87,715,850
NPAT %	8.69%	8.20%	7.92%	8.11%	8.18%

PERCENTAGE OF CONSOLIDATED EQUITY TO TOTAL ASSETS

	2011	2012	2013	2014	2015
Equity	78,187,666	80,590,296	82,830,153	85,177,924	87,715,850
Total Assets	121,799,942	124,340,649	127,735,855	130,649,938	133,384,704
% Equity/Total Assets	64.19%	64.81%	64.84%	65.20%	65.76%

SUPPLY QUALITY TARGETS

SAIFI - SYSTEM AVERAGE INTERRUPTION FREQUENCY INDEX (THE AVERAGE NUMBER OF TIMES EACH CUSTOMER CONNECTED TO THE NETWORK IS WITHOUT SUPPLY)

2011	2012	2013	2014	2015
0.80	0.80	0.80	0.80	0.80

SAIDI - SYSTEM AVERAGE INTERRUPTION DURATION INDEX (THE AVERAGE TOTAL TIMES IN MINUTES EACH CUSTOMER CONNECTED TO THE NETWORK IS WITHOUT SUPPLY)

2011	2012	2013	2014	2015
31.54	31.54	31.54	31.54	31.54

THE COMMERCE COMMISSION SUPPLY QUALITY LIMITS ARE:

SAIFI	1.97
SAIDI	83.36 minutes

PROPOSED DISTRIBUTIONS

To provide the shareholder with a dividend of \$4.3 million for the year ended 31 March 2011 and increasing by \$200,000 per year to \$5.1 million in 2015.

INFORMATION TO BE REPORTED

The Company will report on a six-month and annual basis, in the form set down by legislation. An audited Annual Report is required to be delivered to the Shareholder by 30 June with the opportunity to assess the performance of the Company, and the value of the investment.

Un-audited half-yearly accounts will include an Income Statement and a Balance Sheet, together with such other supporting information as may be required to enable an informed assessment of the Company's performance during the reporting period, as agreed between the Shareholder and the Directors.

In addition, a monthly Consolidated Summary report will be provided to the Shareholder showing the Financial Performance of the Group.

Transactions with related parties primarily consist of administration and management services.

All related party transactions are eliminated in the preparation of the Annual Financial Statements.

ACQUISITION PROCEDURES

The Company will not establish any new company or other organisation or acquire shares, equity, voting interests or memberships of any company or organisation without the Directors having gained prior approval of the shareholder.

Except by a special resolution of shareholders the Company may not enter into a major transaction. A major transaction includes the acquisition of, or an agreement to acquire assets, the value of which are more than 100% of Electricity Invercargill Limited's assets before acquisition.

COMPENSATION SOUGHT FROM LOCAL AUTHORITIES

EIL is not aware of any compensation sought from any local authority apart from a contribution towards the cost of undergrounding overhead lines associated with local authority streetlights. It is not possible to accurately quantify the amount each year as it depends on the nature of the specific projects undertaken, however the amount is estimated at \$100,000 per annum.

BOARD ESTIMATE OF THE VALUE OF SHAREHOLDER'S INVESTMENT

The Directors estimate the commercial value of the shareholder's investment in the group to be at least the value of shareholder's equity reported in EIL's financial statements and SOI.

Each year as part of the financial reporting process the Board considers its investments for signs of impairment. Presently there are no signs of impairment however this may be subject to future adverse consequences of any regulatory decision made by the Commerce Commission.

GOVERNANCE

EIL's Directors are appointed by its shareholder, Invercargill City Holdings Limited. Two of the four Director appointments are made from the pool of publicly elected Invercargill City Council Councillors.

ROLE OF THE BOARD

The Board is responsible for the final decision making with respect to the Company. The responsibility includes:

- Preparation and approval of the Business Plan and Statement of Intent
- Oversight of the PowerNet management contract
- Monitoring Company and investment performance
- Approval of the corporate, operational, financial and dividend policies
- Risk identification and management
- Authority delegation
- Establishing internal control and information systems
- Shareholder reporting
- Stakeholder relationships
- Investment opportunities
- Ensuring compliance with relevant legislation.
- Appointment of the Chief Executive.

The Board does not have any sub-committees due to the small number of Directors, consequently audit and risk management is a function of the full Board. Remuneration policies and practices are performed by a sub-committee within PowerNet Limited. Treasury management and policy setting is performed by EIL's shareholder ICHL.

BOARD PERFORMANCE

The Board monitors its own performance and the performance of PowerNet management and the various director appointments to entities EIL invests in. The purpose of these reviews is to ensure performance and capability and to identify any areas for improvement.

STATEMENT OF INTENT

Each year in accordance with the Energy Companies Act 1992 the Board submits a draft Statement of Intent (SOI) for the coming financial year and the four succeeding years. The SOI sets out the nature and scope of the activities to be undertaken by EIL, its objectives and key performance indicators by which EIL's performance can be measured.

After consulting with ICHL and considering its comments on the draft SOI the final SOI is approved by the Company's Board. The final SOI is delivered to ICHL, placed on the internet and advertised as being available to the public, with copies at the Company's registered office.

INVESTMENT PERFORMANCE

EIL has a number of significant investments in other entities. The Company receives quarterly updates from each entity and has director representation on each entity's governing body to assist with performance monitoring and decision making.

STATEMENT OF ACCOUNTING POLICIES

The Accounting Policies of Electricity Invercargill Limited disclosed in the previous year's annual Financial Statements are:

REPORTING ENTITY

The parent entity, Electricity Invercargill Limited is a profit oriented limited liability company, that was incorporated in New Zealand on 30 June 1991, is registered under the Companies Act 1993 and whose registered office is at 251 Racecourse Road, Invercargill. The Company is a wholly owned subsidiary of Invercargill City Holdings Limited. The Group consists of Electricity Invercargill Limited, its subsidiaries and its interest in associates and jointly controlled entities (refer to notes 8, 9 and 10).

The financial statements have been prepared in accordance with the requirements of the Energy Companies Act 1992, the Companies Act 1993 and the Financial Reporting Act 1993. The financial statements have been prepared in accordance with New Zealand Generally Accepted Accounting Practice (NZ GAAP). They comply with the New Zealand Equivalents to International Financial Reporting Standards (NZ IFRS) as appropriate for profit oriented entities. These financial statements also comply with International Financial Reporting Standards (IFRS).

The principal activity of Electricity Invercargill Limited is the provision of electricity distribution services.

The financial statements were approved by the Board of Directors on 25 June 2009.

BASIS OF PREPARATION

These financial statements are presented in New Zealand dollars, rounded to the nearest thousand. The accounting principles recognised as appropriate for the measurement and reporting of earnings and financial position on an historical cost basis are followed by the Group, with the exception that certain property, plant and equipment has been revalued to fair value.

The accounting policies set out below have been applied consistently to all periods presented in these financial statements.

USE OF ESTIMATES AND JUDGEMENTS

The preparation of financial statements to conform to NZ IFRS requires management to make judgements, estimates and assumptions that affect the application of accounting policies and the reported amounts of assets, liabilities, income and expenses. Actual results may differ from these estimates. The estimates and associated assumptions have been based on historical experience and other factors that are believed to be reasonable under the circumstances.

In particular estimates and assumptions have been used in the following areas:

- Property, plant and equipment
- Value of donated assets
- Employee benefits
- Recoverable amount from Cash Generating Units (CGU).

In the process of applying the Group's accounting policies, management has made the following judgements, estimates and assumptions that have the most significant impact on the amounts recognised in these financial statements.

The Group operates extensive integrated electricity distribution networks comprising large numbers of relatively minor individual network asset components. These components are replaced over time as part of an ongoing maintenance/refurbishment programme, consistent with the Group's approved network asset management plans. The costs associated with recording and tracking all individual components replaced and removed from the networks substantially outweigh the benefits of doing so. Management has estimated the quantities and the carrying values of components removed from the networks in each reporting period. Any errors in the estimates of such removals are corrected at the next asset revaluation, and are not considered to be material on either an annual or a cumulative basis with respect to either reported net surpluses or carrying values of the networks.

The Group enters into arrangements with customers to purchase new network assets at below current replacement costs. Management has estimated the difference between the cash costs and the replacement costs of these assets and the differences are reported within revenue. Any errors in estimating the carrying values of these assets are corrected at the next asset revaluation and are not considered to be material on either an annual or a cumulative basis with respect to either reported net profits or carrying values of the network.

The Group invoices its customers (predominantly electricity retailers) monthly for electricity delivery services on the basis of an estimation of usage, adjusted for the latest wash-up data available from the electricity wholesale market and certain metering data from electricity retailers. Management has made an allowance in revenue and in current assets/liabilities for any amounts which are estimated to be under/over charged during the reporting period. However, as final wash-up metering data is not available for in excess of twelve months, it is possible the final amounts payable or receivable may vary from that calculated.

Other areas where judgement has been exercised in preparing these financial statements are in relation to calculating the recoverable amounts from Cash Generating Units and the amounts of employee entitlements.

New Standards and Interpretations not yet Adopted

In preparing these financial statements in accordance with NZ IFRS, the following standards have been issued but are not applicable at this time.

NZ IFRS 8 Operating Segments
NZ IAS 1 (Revised) Presentation of Financial Statements
NZ IAS 23 Borrowing Costs

The above Standards become effective for annual reporting periods beginning on or after 1 January 2009 and are expected to be initially applied in the year ending 31 March 2010.

The impact of NZ IAS1 (Revised) is expected only to have an impact on presentation and the effects of NZ IAS 23 and NZ IFRS 8 are not able to be reliably measured or estimated at this stage.

Specific Accounting Policies

a) Principles of Consolidation

(i) Subsidiaries

Subsidiaries are all entities over which the Group has the power directly or indirectly to govern the financial and operating policies of an entity so as to obtain benefits from its activities. On acquisition, the assets, liabilities and contingent liabilities of a subsidiary are measured at their fair values at the date of acquisition. Any excess of the cost of acquisition over the fair values of the identifiable net assets acquired is recognised as goodwill. If, after reassessment, the fair values of the identifiable net assets acquired exceeds the cost of acquisition, the difference is credited to the income statement in the period of acquisition. The financial statements of subsidiaries are included in the consolidated financial statements from the date that control commences until the date that control ceases.

(ii) Associates

Associates are those entities for which the group has significant influence, but not control, over the financial and operating policies. The consolidated financial statements include the Group's share of the total recognised gains and losses of associates on an equity accounted basis, from the date that significant influence commences until the date that significant influence ceases.

(iii) Joint Ventures

Joint Ventures are those entities over which the Group has joint control, established by contractual agreement. The consolidated financial statements include the Group's proportionate share of the joint venture entities' assets, liabilities, revenue and expenses with items of a similar nature on a line by line basis, from the date joint control commences until the date joint control ceases.

(iv) Transactions eliminated on consolidation

All significant inter-company transactions, balances and unrealised gains on transactions between group companies are eliminated on consolidation. Unrealised gains arising from transactions with associates and jointly controlled entities are eliminated to the extent of the Group's interest in the entity. Unrealised losses are also eliminated unless the transaction provides evidence of an impairment of the assets transferred.

(v) Parent Investments

Investments in subsidiaries, associates and joint ventures are accounted for at cost in the Parent financial statements.

b) Revenue

Revenue is measured at the fair value of the consideration given for the sale of goods and services, net of goods and services tax. Revenue from the sale of goods is recognised when the significant risks and rewards or ownership have been transferred to the buyer, recovery of the consideration is probable, the associated costs and possible return of goods can be estimated reliably and there is no continuing management involvement with the goods.

(i) Network Charges

Revenue comprises the amounts received and receivable for goods and services supplied to customers in the ordinary course of business.

(ii) Investment Income

Interest income is recognised on a time-proportion basis using the effective interest method.

(iii) Dividend Income

Dividend income is recognised when the right to receive payment is established.

(iv) Customer Contributions

Contributions from customers in relation to the construction of new lines for the network and donated assets are accounted for as revenue in the year in which they are received.

(v) Government Grants

Government grants that compensate the group for the cost of an asset are recognised initially in the balance sheet as deferred income and then recognised in profit and loss as other operating income on a systematic basis over the useful life of the asset.

c) Finance Costs

Finance costs comprise interest expense on borrowings, changes in the fair value of financial assets through the income statement and impairment losses recognised on financial assets (except for trade receivables). All borrowing costs are recognised in the income statement using the effective interest method.

d) Inventories

Inventories are stated at the lower of cost at weighted average cost price, and net realisable value. Obsolete items of inventory (if any) have been written off.

e) Property, Plant and Equipment

(i) Owned Assets

All property, plant and equipment is recognised at cost less accumulated depreciation and impairment losses. The cost of purchased property, plant and equipment is the fair value of the consideration given to acquire the assets and the value of other attributable costs which have been incurred in bringing the assets to the location and condition necessary for their intended service.

The deemed value of property, plant and equipment at 1 April 2005, the date of transition to NZ IFRS, was determined by reference to its fair value at that date.

The Group recognises in the carrying amount of an item of property, plant and equipment the cost of replacing part of such an item, if when that cost is incurred it is probable that the future economic benefits embodied within the item will flow to the Group and the cost of the item can be measured reliably. All other costs are recognised in the income statement as an expense as incurred.

The electricity distribution network is valued at fair value. Fair value is determined on the basis of a periodic valuation, at a maximum of every three years, based on depreciated replacement cost methodology. The fair values are recognised in the financial statements of the Group and are reviewed at the end of each reporting period to ensure that the carrying amount of the distribution network is not materially different from its fair value.

Any revaluation increase arising on the revaluation of assets is credited to the asset revaluation reserve, except to the extent that it reverses a revaluation decrease for the same asset previously recognised as an expense in the income statement, in which case the increase is credited to the income statement to the extent of the decrease previously charged. A decrease in carrying amount arising on revaluation is charged as an expense in the income statement to the extent that it exceeds the balance, if any, held in the asset reserve relating to a previous revaluation of that asset.

When a revalued asset is sold or retired the attributable revaluation surplus remaining in the revaluation reserve, net of any related deferred taxes, is transferred directly to retained earnings.

(ii) Depreciation

Depreciation is charged to the income statement on a combination of straight line and diminishing value bases over the estimated useful lives of all property, plant and equipment. Land is not depreciated. The primary annual rates used are:

Buildings	1.0 – 15%	Straight Line/Diminishing Value
Network Assets	1.4 – 15%	Straight Line
Metering Assets	2.5 – 6.7%	Straight Line
Plant and Equipment	5.0 – 48%	Straight Line/Diminishing Value
Office and EDP Hardware	9.0 – 80.4%	Straight Line/Diminishing Value

(iii) Impairment

At each reporting date the Group reviews the carrying amounts of its assets and assesses them for indications of impairment. If indications of impairment exist, then the assets' recoverable amount is estimated in order to determine the extent of the impairment. The recoverable amounts are the higher of fair value (less costs to sell) and value in use. In assessing value in use, the estimated future pre-tax cash flows are discounted to their present value using a pre-tax discount rate that reflects the market assessments of the time value of money and the risks specific to the assets involved. If the estimated recoverable amount of the asset is less than its carrying amount, the asset is written down to its recoverable amount and an impairment loss is recognised in the income statement, except to the extent that the impairment loss reverses a previous revaluation increase for that asset to the extent of that revaluation increase. When the asset does not generate cash flows independent of other assets, the cash generating unit (CGU) to which the asset belongs is tested for impairment.

Goodwill is tested for impairment annually and whenever there is an indication that it may be impaired. Any impairment of goodwill can not subsequently be reversed.

f) Capital Work in Progress

Capital Work in Progress is stated at cost and is not depreciated. It includes an accrual for the proportion of work completed at the end of the year.

g) Intangible Assets

(i) Goodwill

All business combinations are accounted for by applying the purchase method. Goodwill (if it exists) has been recognised in acquisitions of subsidiaries, associates and joint ventures. In respect of business acquisitions since 1 April 2005, goodwill represents the difference between the cost of the acquisition and the fair value of the net identifiable assets acquired.

In respect of acquisitions prior to this date, goodwill is included on the basis of its deemed cost, which represents the amount recorded under previous NZ GAAP at the transition date.

Goodwill is stated at cost less any accumulated impairment losses. Goodwill is allocated to CGUs and is no longer amortised but is tested annually for impairment. In respect of associates, the carrying amount of goodwill is included in the carrying amount of the investment in the associate.

Negative goodwill arising on an acquisition is recognised directly in profit and loss.

(ii) Computer Software

Under NZ IFRS computer software is classified as an intangible asset and amortised on a straight line/diminishing value basis over its estimated useful life.

(iii) Research and Development

Research costs are expenses in the year in which they are incurred. Development costs are capitalised to the extent that future benefits (exceeding the costs) are expected to accrue.

(iv) Amortisation

Amortisation is charged to the income statement on a straight-line basis over the estimated useful lives of intangible assets, other than goodwill, from the date that they are available for use. The estimated amortisation rates for the current period are as follows:

Software	12.5 – 48%	Straight Line/Diminishing Value
----------	------------	---------------------------------

h) Taxation

Income tax on the surplus or deficit for the period presented comprises current and deferred tax. Income tax is recognised in the income statement except to the extent that it relates to items recognised directly in equity, in which case it is recognised in equity.

Current tax is the expected tax payable on the taxable income for the year, using tax rates enacted or substantially enacted at the balance sheet date, and any adjustments to tax payable in respect of previous years.

Deferred tax is provided using the balance sheet liability method, providing for temporary differences between the carrying amount of assets and liabilities for financial reporting purposes and the amounts used for taxation purposes. The deferred income tax is not accounted for if it arises from initial recognition of an asset or liability in a transaction, other than a business combination, that at the time of the transaction affects neither accounting nor taxable profit and loss. Deferred income tax is recorded using tax rates enacted or substantially enacted at the balance sheet date and which are expected to apply when the related deferred tax asset is realised or the deferred tax liability is settled.

Deferred income tax assets are recognised to the extent that it is probable that future taxable profit will be available against which the temporary differences can be utilised.

Deferred income tax is provided on temporary differences arising on investments in subsidiaries, associates and joint ventures, except where the timing of the reversal of the temporary difference is controlled by the group and it is probable that the temporary difference will not reverse in the foreseeable future.

i) Goods and Services Tax

All amounts in the financial statements have been shown exclusive of Good and Services Tax, with the exception of receivables and payables which are shown inclusive of Goods and Services Tax.

j) Operating Leases

Leases where the lessor effectively retains substantially all the risks and benefits of ownership of the leased items are classified as operating leases. Payments under these leases are recognised in the periods when they are incurred.

(k) Financial Assets

Where applicable the Group classifies its investments in the following categories:

Financial assets at fair value through the income statement, loans and receivables, held-to-maturity investments, and available-for-sale financial assets. The classification depends on the purpose for which the investments were acquired. Management determines the classification of its investments at initial recognition and, in the case of assets classified as held-to-maturity, re-evaluates this designation at each reporting date.

(i) Financial Assets at Fair Value through the Income Statement

Financial assets at fair value through the income statement are financial assets held for trading which are acquired principally for the purpose of selling in the short term with the intention of making a profit. Derivatives are also categorised as held for trading unless they are designated as hedges.

(ii) Loans and Receivables

Loans and receivables are non-derivative financial assets with fixed or determinable payments that are not quoted in an active market. They arise when the company provides money, goods or services directly to a debtor with no intention of selling the receivable. They are included in current assets, except for those with maturities greater than 12 months after the balance sheet date which are classified as non-current assets. Loans and receivables are included in receivables in the balance sheet.

(iii) Held-to-Maturity Investments

Held-to-maturity investments are non-derivative financial assets with fixed or determinable payments and fixed maturities that the company's management has the positive intention and ability to hold to maturity.

(iv) Available-for-Sale Financial Assets

Available-for-sale financial assets, comprising principally marketable equity securities, are non-derivatives that are either designated in this category or not classified in any of the other categories. They are included in non-current assets unless management intends to dispose of the investment within 12 months of the balance sheet date.

Available-for-sale financial assets and financial assets at fair value through the income statement are subsequently carried at fair value. Loans and receivables and held-to-maturity investments are carried at amortised cost using the effective interest method. Gains or losses arising from changes in the fair value of the 'financial assets at fair value through the income statement' category, including interest and dividend income, are presented in the income statement within other income or other expenses in the period in which they arise.

l) Financial Instruments

(i) Receivables

Trade and other receivables are recognised initially at fair value. A provision for impairment of trade receivables is established when there is objective evidence that the Group will not be able to collect all amounts due according to the original terms of the receivables.

(ii) Cash and cash equivalents

Cash and cash equivalents comprise cash on hand and demand deposits and other short-term highly liquid investments that are readily convertible to a known amount of cash and are subject to an insignificant amount of risk of changes in value.

(iii) Trade and Other Payables

Trade and other payables are stated at fair value.

(iv) Borrowings

Borrowings are recognised initially at fair value, net of any transaction costs incurred. Borrowings are subsequently stated at amortised cost; any differences between the proceeds (net of transaction costs) and the redemption value is recognised in the income statement over the period of the borrowings using the effective interest method.

Borrowings are classified as current liabilities unless the Group has an unconditional right to defer settlement of the liability at least 12 months after the balance date.

m) Employee Entitlements

Provision is made for benefits accruing to employees in respect of salaries and wages, annual leave and long service leave when it is probable that they will be required and they are capable of being measured reliably.

Provisions made in respect of employee benefits expected to be settled within 12 months are measured at their nominal values using the remuneration rate expected at the time of settlement.

Provisions made in respect of employee benefits that are not expected to be settled within 12 months are measured as the present value of the estimated future cash outflows to be made by the Group in respect of services provided by employees up to balance date.

n) Seasonality

The Group's revenues and profits are generally evenly distributed throughout the year, hence the results are not subject to seasonality.